

Thank you for purchasing our product. Before installing, using or repairing the product, please read this manual carefully and pay attention to the safety warnings and instructions. This will ensure not only personal safety but also the long-term durability of the product.

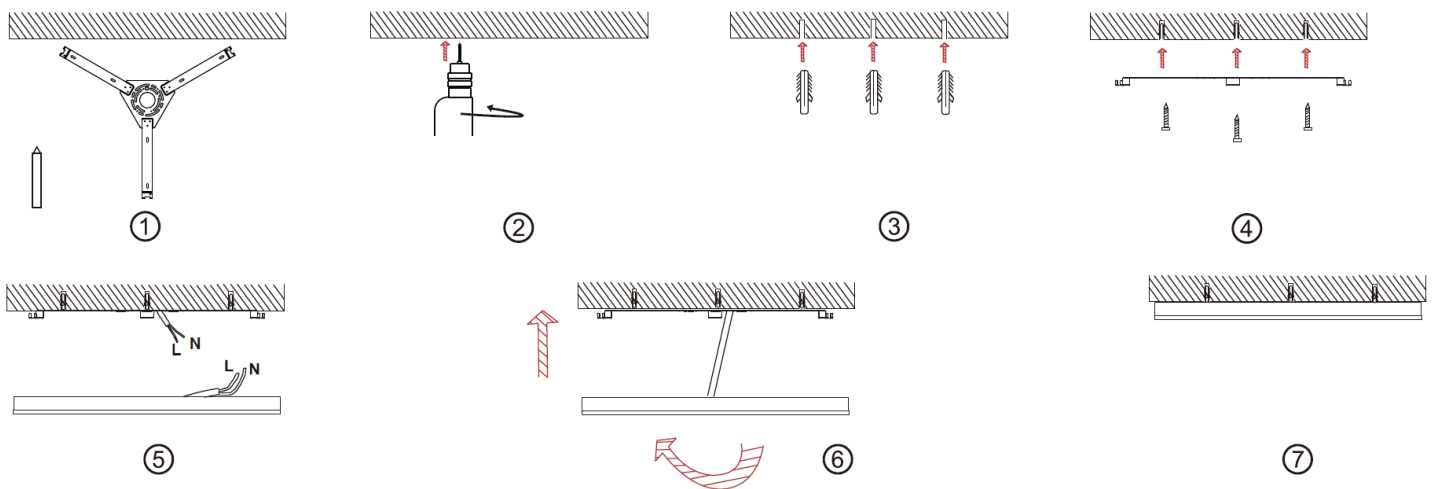
WARNING

- Installation must only be carried out by a qualified electrician.
- Power supply: 220–240 V AC 50/60 Hz.
- For indoor use only.
- If the power cable of this luminaire is damaged, it must be replaced by the manufacturer's service department.
- There are no replaceable parts in the device.

INSTALLATION

1. Align the holes in the mounting plate with the screw holes and mark their position with a marker pen.
2. Using a hammer drill, drill holes in the marked positions in the ceiling.
3. Insert wall plugs into the drilled holes in the ceiling.
4. Secure the luminaire's mounting plate to the ceiling using screws.
5. Connect the L and N supply wires on the light fitting to the power cable (switch off the power supply before connecting).
6. Then press the light fitting into the mounting hole in the specified direction. Once you hear a click, the installation is complete.
7. Installation complete.

Note: Suspended installation is possible for this type of product. The accessory (WO901-R) must be purchased separately. It is not included in the package.



The light source in this luminaire is non-replaceable; at the end of its service life, the entire luminaire must be replaced and disposed of at a designated collection point. This product contains a light source which, for design reasons, cannot be removed for verification; therefore, the entire product is considered to be the light source. The power cable cannot be replaced; if it is damaged, the device must not be used any further.

A CE Declaration of Conformity has been issued for the product in accordance with applicable regulations. Available on request from the manufacturer: info@solight.cz, or for download at www.solight.sk.

